



Sikalastic® RoofPro

HIGH WIND ROOFING SYSTEMS

FULLY BONDED & SEAMLESS WATERPROOFING MEMBRANES
THE PERFECT SOLUTION FOR ROOFS EXPOSED TO HIGH WIND LOADS

Sikalastic®
committed brand for
RoofPRO.DeckPRO.

BUILDING TRUST

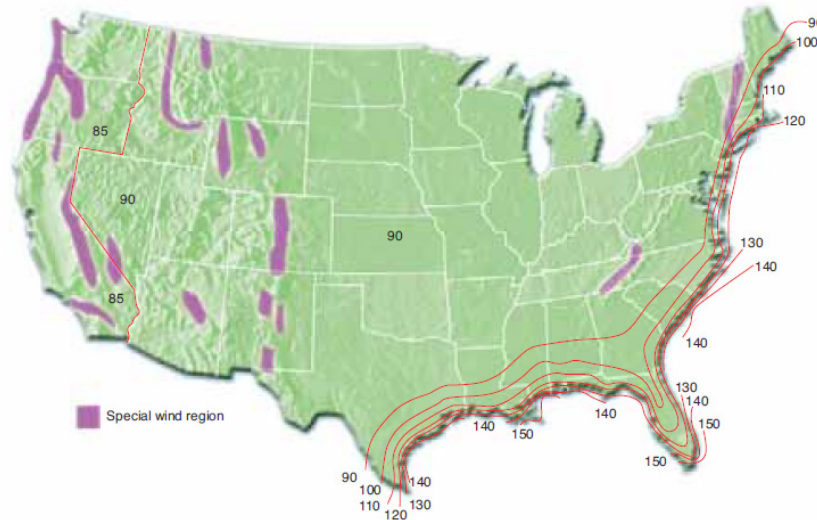


Sikalastic® RoofPro

HIGH WIND ROOFING SYSTEMS

What Is a High Wind event?

All too often roofing decisions are made without sufficient consideration for the wind performance of the roofing system. A roofing system will truly be tested when it experiences multiple wind events over time in the most extreme weather conditions. The National Oceanic and Atmospheric Administration's National Weather Service states that "a high wind event has occurred whenever sustained winds of 40 mph or more, or a peak gust of 58 mph or more, has been reported from reliable observing equipment."



Projects Where a High Wind System should be considered:

High wind events are not just limited to those buildings that are located near the coastline or in tornado prone areas. Consider the following criteria when determining if your building should have a roof system designed to resist high wind loads.

- Located within hurricane prone areas
- Building height of 70 feet or taller
- Location near any large body of water (coastal or inland)
- Building codes requiring a roof to withstand winds greater than hurricane velocity (74 mph)
- A desire for long term performance and
- Complete security



Experience You Can Rely On

You want to work with a roofing manufacturer that has the experience to provide a roofing solution that will perform to your high wind performance needs. Sikalastic® RoofPro systems have stood the test of time in the harshest climates all over the world. Our experience with high-wind roofing systems in such diverse locations as the Swiss Alps, the coasts of the UK to the Florida coast will provide you with the peace-of-mind that comes from working with an experienced partner.

Sikalastic® RoofPro systems are widely recognized for exemplifying the highest standards of quality, reliability and watertight protection. Our record of proven performance is on display on buildings worldwide, in every imaginable climate. All told, as a global market leader for liquid applied roofing systems we've more than 30 years of proven track record with our Sikalastic® RoofPro systems.

Sikalastic® RoofPro

FULLY BONDED & SEAMLESS WATERPROOFING SYSTEMS

Where Is Your Roof Most Vulnerable To Leak?

At the seams and details! Avoiding joints or seams is beneficial where complex structures need to be waterproofed.

Conventional sheet membrane systems do have joints or overlaps, and are either loose laid or partially bonded to the substrate. Sikalastic® RoofPro liquid applied membranes systems are cold applied and form a 100 % seamless waterproofing membrane that is fully bonded to the substrate, and ensure highest performance in high wind zones. When the reinforced Sikalastic® Roof Pro system has been cured, it becomes a monolithic waterproofing membrane impervious to water and moisture infiltration, but also to lateral water migration.

Both characteristics, a high adhesion performance and a 100 % seamless waterproofing are the most crucial factors when it comes to high wind uplift resistance. Sikalastic® RoofPro waterproofing systems have outstanding performances in both and are often the first choice in areas where high wind loads can occur.



Sikalastic® RoofPro Systems

A seamless, fully bonded, liquid applied reinforced roofing and waterproofing solution that protects your building, even under the harshest weather conditions.

- **Fully bonded and self terminating flashing – no lateral water migration**
- **Very high wind load resistant up to 990 psf (on concrete)**
- **Highly UV resistant – Non yellowing - ideal for Cool Roofs**
- **Severe hail rating – lower risk of hail damage**
- Highly elastic – retains flexibility from -22 to 176 °F
- High tensile strength – durable and long lasting waterproofing solution
- Seamless waterproofing membrane – no leaking seams
- Single component – No mixing errors
- Ultra high solids – High material yield
- Cold applied – Requires no heat or flame
- Low VOC content – California VOC and AQMD compliant
- Fully reinforced

GREATER THAN 30 YEARS HISTORY UP TO 25 YEARS SYSTEM WARRANTIES!

Proven Materials

A high quality membrane is the key to any successful roofing or waterproofing project that demands absolute system integrity. With that in mind, Sika manufacturing process uses only the highest quality materials to produce systems that offers unmatched durability and longevity.

Expert Assistance

Our skilled technical field service team make Sikalastic® RoofPro stand apart from other manufacturers. We're involved at each major milestone – offering design assistance to architects and specifiers as needed, reviewing construction documents, and training of approved applicators in the classroom and at the job site, which is a key requirement for the comprehensive warranty package.

Skillful Workmanship

Sikalastic® RoofPro systems are limited to be sold only to authorized applicators to ensure highest quality standards in execution – only the best are invited to join our team. Maintaining strict control over the installation process means that quality is carried through from start to finish.

Approvals

- Miami Dade County approved
- FM approved
- CRRC listed

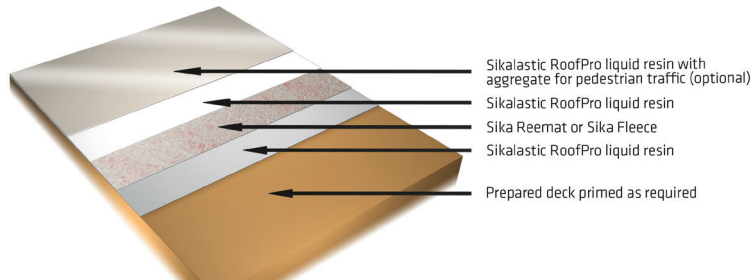


Sikalastic® RoofPro

FULLY BONDED & SEAMLESS WATERPROOFING SYSTEMS

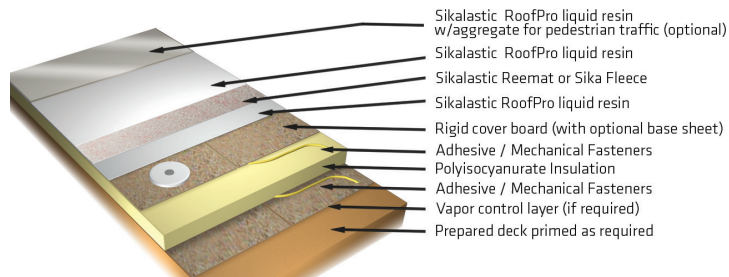
Sikalastic® RoofPro Direct-to-Substrate Assembly

Suitable for direct application to structural concrete decks, plywood decks, and many existing smooth and granule-surfaced roofing systems. Reference Product/System Data Sheet for membrane/system requirements.



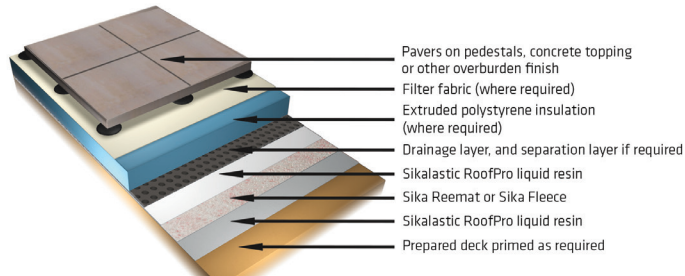
Sikalastic® RoofPro Built-Up Insulated Assembly

Suitable for applications requiring the installation of insulation, including new construction, roof replacement, and upgrading of existing roofing systems. Full System Warranty available. Reference Product/System Data Sheet for membrane/system requirements.



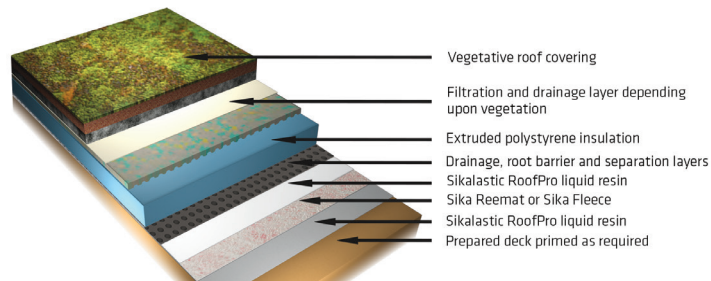
Sikalastic® RoofPro Plaza Deck and Protected Membrane Assembly

Suitable for applications where pavers, wood decking, or tile will be installed over the roofing/waterproofing membrane. An insulation layer may or may not be included. Full System Warranty available. Reference Product/System Data Sheet for membrane/system requirements.



Sikalastic® RoofPro Vegetated and Hardscape Assembly

Suitable for both intensive and extensive vegetated roofing applications where growing media and plantings will be installed over the roofing/waterproofing membrane. Typical applications include hardscape such as concrete pavers or stone ballast. An insulation layer may or may not be included. Full System Warranty available. Reference Product/System Data Sheet for membrane/system requirements.



Application Overview

Step 1 – SUBSTRATE PREPARATION



Step 2 – INSULATION/COVER BOARD (As specified)



Step 3 – PRIMER APPLICATION



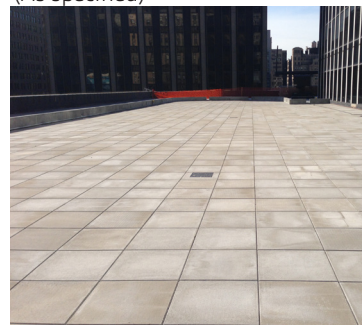
Step 4 – DETAILING/FLASHING



Step 5 – MEMBRANE APPLICATION



Step 6 – SURFACING/OVERBURDEN (As specified)



Resin Options

Sikalastic® RoofPro systems are available with a number of liquid resin options to provide cost-effective, high performance solutions to various roofing and waterproofing applications:

- **Sikalastic®-601 BC** - Economical base coat resin for use with Sika Reemat reinforcement
- **Sikalastic®-621 TC** - Enhanced base and top coat resin for use with Reemat and fleece reinforcements
- **Sikalastic®-641 Lo-VOC** - Low odor and low VOC version of Sikalastic 621 TC, utilizing patented i-cure technology, meets California SCAQMD requirements.
- **Sikalastic®-624 WP** - Alkaline-resistant resin for use with Reemat and fleece reinforcements under tile and concrete
- **Sikalastic®-644 Lo-VOC** - Low odor and low VOC version of Sikalastic 624 WP, utilizing patented i-cure technology, meets California SCAQMD requirements



Packaging
5 Gal. Pail

Color
Red



Packaging
5 Gal. Pail

Colors
White
Pearl Gray
Steel Gray
Mushroom
Copper Green



Packaging
5 Gal. Pail

Colors
White
Pearl Gray
Steel Gray
Mushroom
Copper Green



Packaging
5 Gal. Pail

Colors
White
Pearl Gray



Packaging
5 Gal. Pail

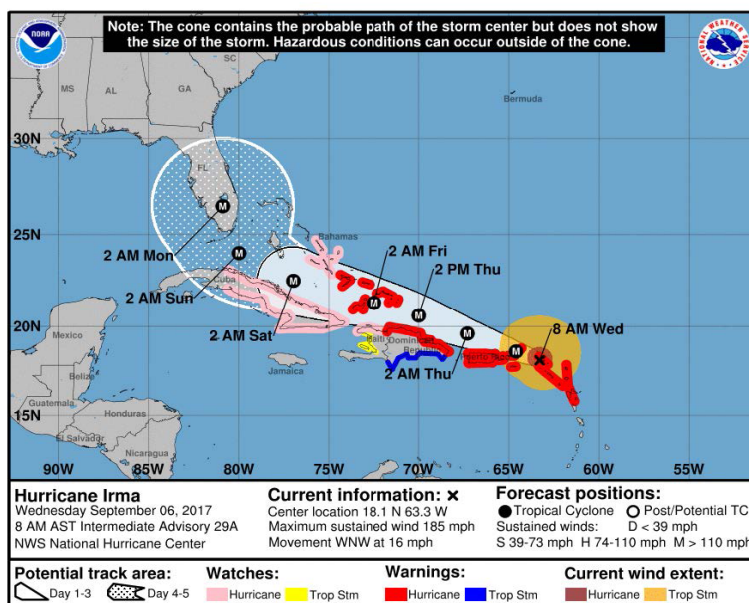
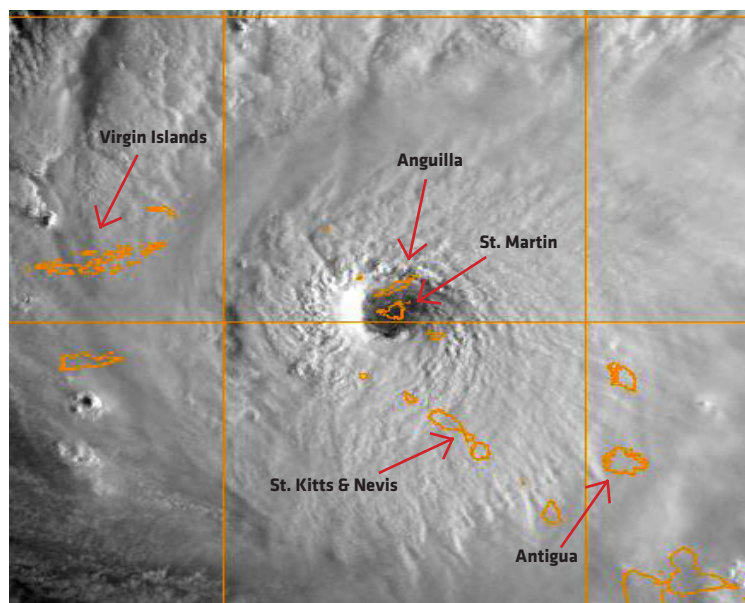
Colors
White
Pearl Gray

Sikalastic® RoofPro

A HURRICANE SURVIVOR

Case Study: Sikalastic® RoofPro Survives Hurricane Irma

On the morning of Wednesday September 6, 2017, the eye of Hurricane Irma passed over the tiny Caribbean islands of Anguilla and St. Martin causing widespread destruction on both islands.



WHILE OUR HEARTS GO OUT TO THE MANY PEOPLE SUFFERING FROM THE EFFECTS OF THE HURRICANES, THERE WAS SOME GOOD NEWS TO REPORT

Amid the widespread destruction on these two islands, two buildings were spared the ravaging effects of water infiltration through a failed roof membrane system.

One of the buildings that was spared was the medical building at the American University of the Caribbean (AUC) on the Dutch side of St. Martin. Built in 2013, the roof was made watertight with 26,000 square feet of Sikalastic RoofPRO liquid applied membrane during construction.



Sikalastic® RoofPRO membrane on the medical building roof at the American University of the Caribbean in St. Martin.

When it made landfall on these two neighboring islands that are about 200 miles east of Puerto Rico, Irma was a Category 5 Hurricane with sustained winds of 185 mph that tore through buildings and ripped structures apart. On many commercial, hotel, and high-end residential buildings that had been built with flat or low slope reinforced concrete roofs, the roof structure remained in tact but their waterproof membranes were severely affected by the high winds. In many cases, the waterproof membrane had been compromised to the point that they no longer kept water from entering the interior spaces of the building, rendering many buildings uninhabitable.

Other than a few cuts and scrapes in the membrane caused by mechanical equipment on the roof that became airborne during the storm, the RoofPRO membrane was largely unscathed. And because the membrane is liquid applied, it is fully bonded to the concrete roof deck and did not allow water to get under the membrane and accumulate at low spots on the roof deck and eventually find its way into the building.



A closer look at skid marks in RoofPRO membrane.



Still bonded after 185 mph winds from Hurricane Irma.



Bonded membrane does not allow water to migrate laterally



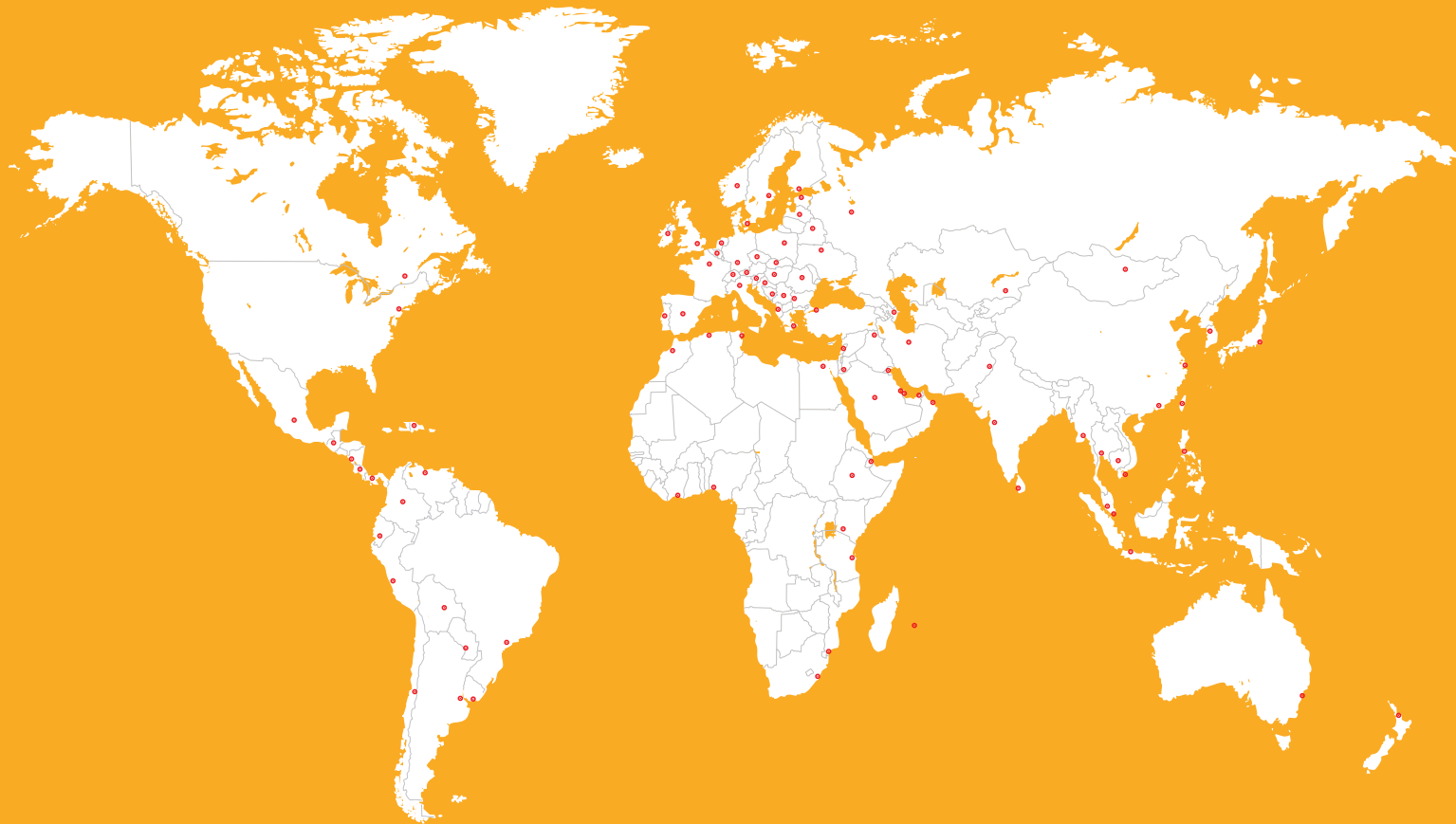
Mechanical equipment that became airborne on the CEP building during the hurricane caused skid marks in RoofPROmembrane.

On the island of Anguilla, the Four Seasons Resort, owned by Starwood Capital, had 14,000 sq ft of RoofPRO membrane installed during the winter of 2017 on the roof of its Central Energy Plant (CEP) building. Similar to what happened in St. Martin, the RoofPRO membrane on the CEP building only had some scrapes and bruises from mechanical equipment on the roof that was pushed around by the high winds, but no significant damage occurred to the membrane that allowed water to enter the building through the roof deck. Because of the success of the RoofPRO membrane during Hurricane Irma, the Four Seasons Resort is planning to use the RoofPRO membrane to replace the 300,000 sq ft of loose laid membrane system that was damaged during the storm.



Torn off loose laid membrane system.

Two weeks after Irma swept through the Caribbean region, Hurricane Maria completed the 1-2 punch. Fortunately, except for the Virgin Islands, Maria hit a different set of Caribbean islands. Dominica, St. Kitts & Nevis, Puerto Rico, Dominican Republic, and Turks & Caicos took the brunt of Hurricane Maria, with Dominica and Puerto Rico getting hit especially hard. Initial reports from RoofPRO projects in Antigua, St. Kitts & Nevis, Puerto Rico, and Turks & Caicos are confirm the RoofPRO membranes on all of those islands not only survived, but held up extremely well against two of the most powerful Caribbean hurricanes on record.



FOR MORE SIKA INFORMATION:

Contact Sika: Phone: 1-800-933-SIKA (Nationwide), Website: www.usa.sika.com

All sales of Sika products are subject to Sika's current Terms and Conditions of Sale available at www.sikausa.com or by calling 201-933-8800. Prior to each use of any Sika product, the user must always read and follow the warnings and instructions on the product's most current Product Data Sheet, product label and Material Safety Data Sheet, which are available at www.sikausa.com or by calling Technical Services at 1-800-933-7452. Nothing contained in any Sika materials relieves the user of the obligation to read and follow the warnings and instructions for each Sika product as set forth in the current Product Data Sheet, product label and Material Safety Data Sheet prior to product use.

The sale of all Sika products are subject to the following Limited Warranty:

LIMITED MATERIAL WARRANTY

SIKA warrants this product for one year from date of installation to be free from manufacturing defects and to meet the technical properties on the current Product Data Sheet if used as directed within shelf life. User determines suitability of product for intended use and assumes all risks. Buyer's sole remedy shall be limited to the purchase price or replacement of product exclusive of labor or cost of labor.

NO OTHER WARRANTIES EXPRESS OR IMPLIED SHALL APPLY INCLUDING ANY WARRANTY OF MERCHANTABILITY OR FITNESS FOR A PARTICULAR PURPOSE. SIKA SHALL NOT BE LIABLE UNDER ANY LEGAL THEORY FOR SPECIAL OR CONSEQUENTIAL DAMAGES. SIKA SHALL NOT BE RESPONSIBLE FOR THE USE OF THIS PRODUCT IN A MANNER TO INFRINGE ON ANY PATENT OR ANY OTHER INTELLECTUAL PROPERTY RIGHTS HELD BY OTHERS.

Our most current General Sales Conditions shall apply. Please consult the Product Data Sheets prior to any use and processing.



Sika Corporation
201 Polito Avenue
Lyndhurst, NJ 07071
Phone: 201-933-8800
Fax: 201-933-6225

Sika Canada Inc.
601 Delmar Avenue
Pointe Claire
Quebec H9R 4A9
Phone: 514-697-2610
Fax: 514-694-2792

Sika Mexicana S.A. de C.V.
Carretera Libre Celaya Km. 8.5
Fracc. Industrial Balvanera
Corregidora, Queretaro
C.P. 76920
Phone: 52 442 2385800
Fax: 52 442 2250537

BUILDING TRUST

